

Thank you for purchasing our inkjet printer TS300P-1800.

This "Print Guide" explains the printing method using TS300P-1800 and the software RIP [RasterLink] and items to be checked/set before printing.

## First, confirm the following items:

Before printing, the preparation for TS300P-1800 and the software RIP [RasterLink] is required.

First, prepare the followings:

### **About system configuration (Refer to P. 2)**

The explanation of the system configuration to print is described.

### **Prepare TS300P-1800 (Refer to P. 3)**

To use TS300P-1800, the items below are explained:

- Connect the PC in which the software RIP [RasterLink] has been installed with TS300P-1800.
- Turn on the power supply.
- Depending on the media to be set, adjust the print head height etc.
- Set the media.
- Perform test printing to check whether there is no nozzle clogging etc.
- Correct the feeding rate of media.
- Correct the ink drop position.

### **Prepare the RasterLink (Refer to P. 4)**

The preparation of the software RIP [RasterLink] is explained.

For the installation method, refer to the manual of the RasterLink.

## The printing method using a sample is explained.

Here, the printing method using a sample image included in the attached CD.

### **Perform printing (Refer to P. 5)**

### **Download the profile suitable for the using condition. (Refer to P. 7)**

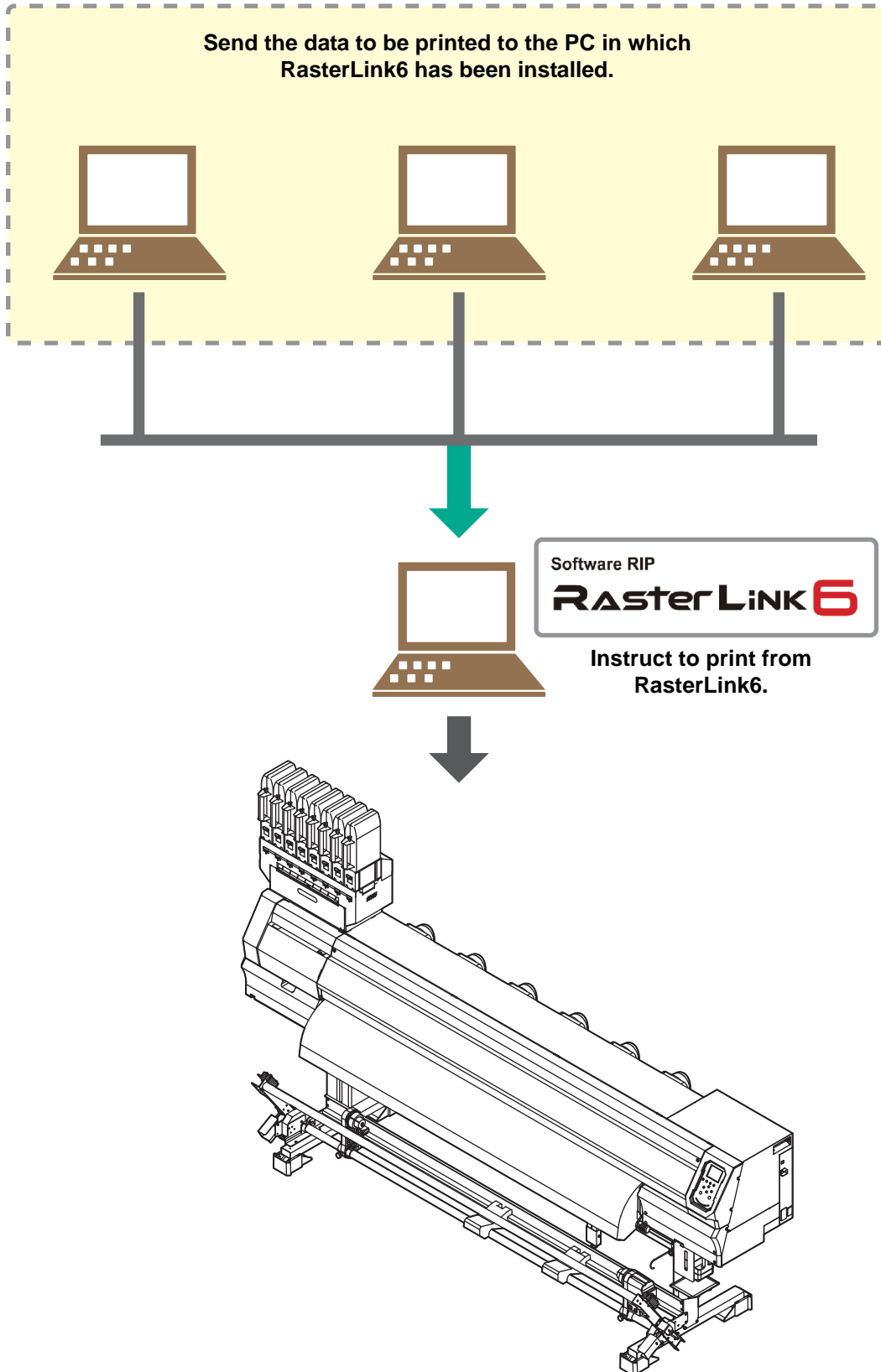
## Some typical questions are described.

### **Typical questions (Refer to P. 9)**

## First, confirm the following items:

### About system configuration

Instruct to print the printing data created with the application such as Illustrator or Photoshop etc. from the PC in which the RasterLink has been installed.

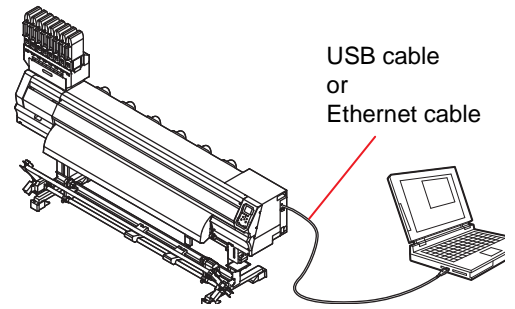


## Prepare TS300P-1800

Following the procedures below, prepare TS300P-1800.

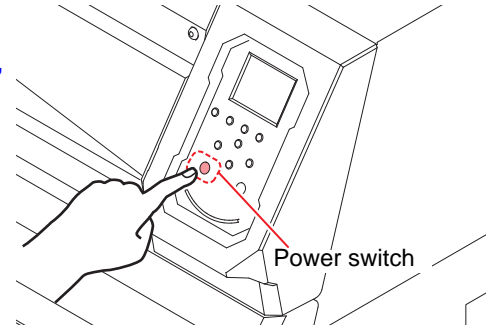
### 1. Connect a PC in which the RasterLink is installed with TS300P-1800.

- For details, refer to [Chapter 1 “Connecting Cables” of TS300P-1800 Operation Manual](#).



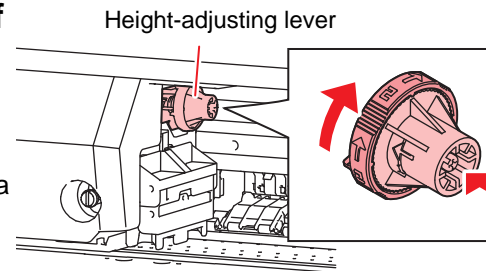
### 2. Turn on the power supply of TS300P-1800.

- For details, refer to [Chapter 2 “Turning the Power ON” of TS300P-1800 Operation Manual](#).



### 3. Before setting a media, check the height of print head.

- For details, refer to [Chapter 2 “Adjusting the Head Height” of TS300P-1800 Operation Manual](#).
- Adjust the Height-adjusting lever depending on the media to be used.



### 4. Set the media.

- When setting the roll media : [Chapter 2 “Setting a roll media” of TS300P-1800 Operation Manual](#)
- When setting the leaf media : [Chapter 2 “Setting leaf media” of TS300P-1800 Operation Manual](#)

### 5. Perform a test printing.

- Check if discharging defect such as nozzle clogging exists or not.
- For details, refer to [Chapter 2 “Test Printing” of TS300P-1800 Operation Manual](#).

### 6. Perform a media correction.

- Correct the feeding rate of media.
- For details, refer to [Chapter 2 “Setting of Media Correction” of TS300P-1800 Operation Manual](#).

### 7. Perform a dot position correction.

- Correct the ink drop position.
- For details, refer to [Chapter 2 “If the Positions of Dots Shift...” of TS300P-1800 Operation Manual](#).

## Prepare the Mimaki Driver

### 1. Check if the attached Mimaki Driver is installed.

- For the installation, refer to [Installation Guide of the attached Mimaki Driver](#).

## Prepare the RasterLink

Check that the software RIP [RasterLink] is prepared.

### 1. Check if the RasterLink is installed.

- If it is installed, the icon on the right is displayed on the PC desktop.
- For the installation, refer to [Installation Guide of the RasterLink](#).

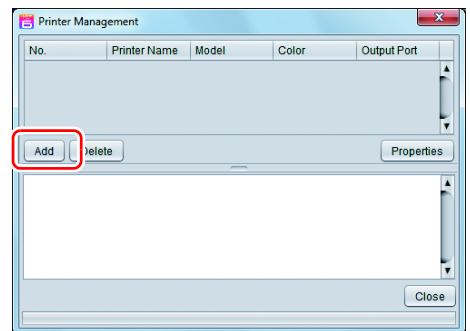


### 2. Check the connection with TS300P-1800.

- (1) Is the power supply of TS300P-1800 turned ON?
- (2) Is the PC in which the RasterLink is installed connected with TS300P-1800?

### 3. Double-click to start the Raster-Link.

- “Printer Management...” is displayed



### 4. Register the printer.

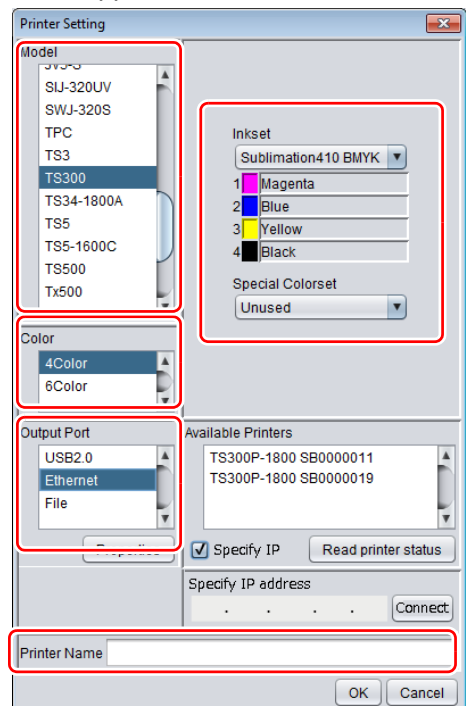
- For print in TS300P-1800, the registration of the printer into the RasterLink is required.
- If the printer has already been registered, this operation can be skipped.

- (1) Click [Add] in the “Printer Management...” window.
- (2) Set the printer information.  
(The setup procedure described below assumes that TS300P-1800 is connected. Set the printer information in the following order:)
  - Model : TS300P-1800
  - Color : Select depending on the device.
  - Output Port : Select depending on the device.
  - Available Printers : Select the device to print to.
  - Printer Name : Enter the TS300P-1800



- The Hot folder of the name entered here is automatically created.
- For an ink set, the information retrieved from the printer is displayed.

- (3) Click [OK].
  - The confirmation screen is displayed.
  - Clicking [OK] starts the registration of the printer.



# Perform printing

Here, the printing method using a sample image included in the CD of the TS300P-1800 Operation Manual.



- Check **P. 2 to P. 4** “**First, confirm the following items:**” without fail before creating a seal/a sticker.

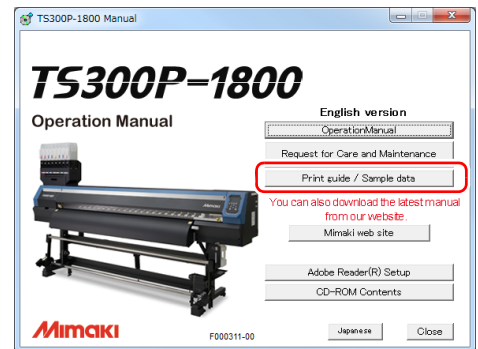
## 1. Double-click to start the RasterLink.

- The main window of the RasterLink is displayed.

## 2. Set the CD of TS300P-1800 Operation Manual into the disk drive.

## 3. Click [Print Guide / Sample data].

- The “Print Guide and Sample Data” dialog is displayed.

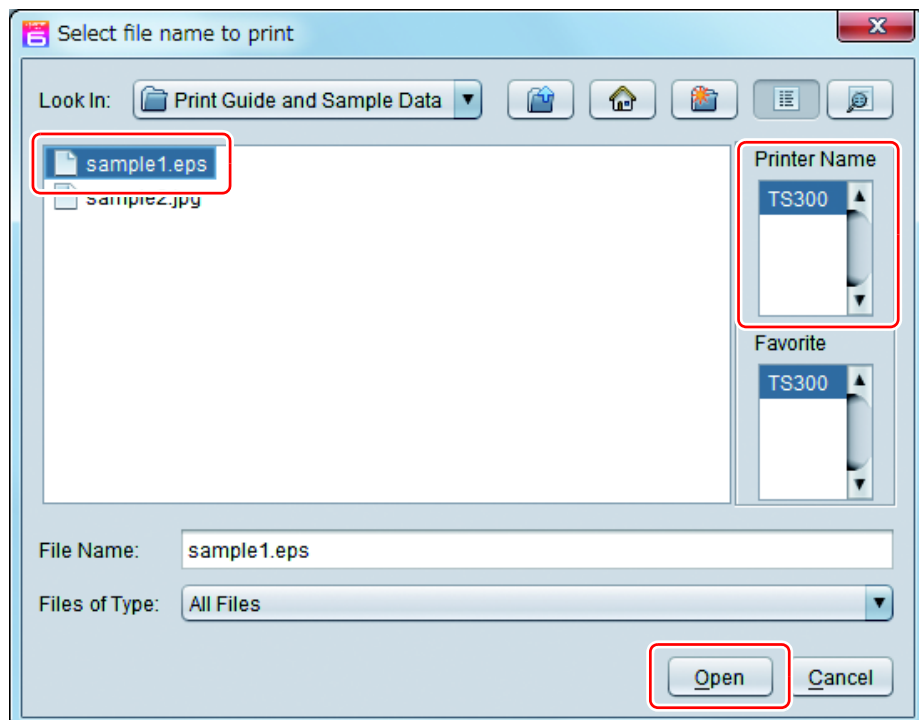


## 4. To select the data you want to print from the RasterLink, select [File], and then [Open] from the menu.

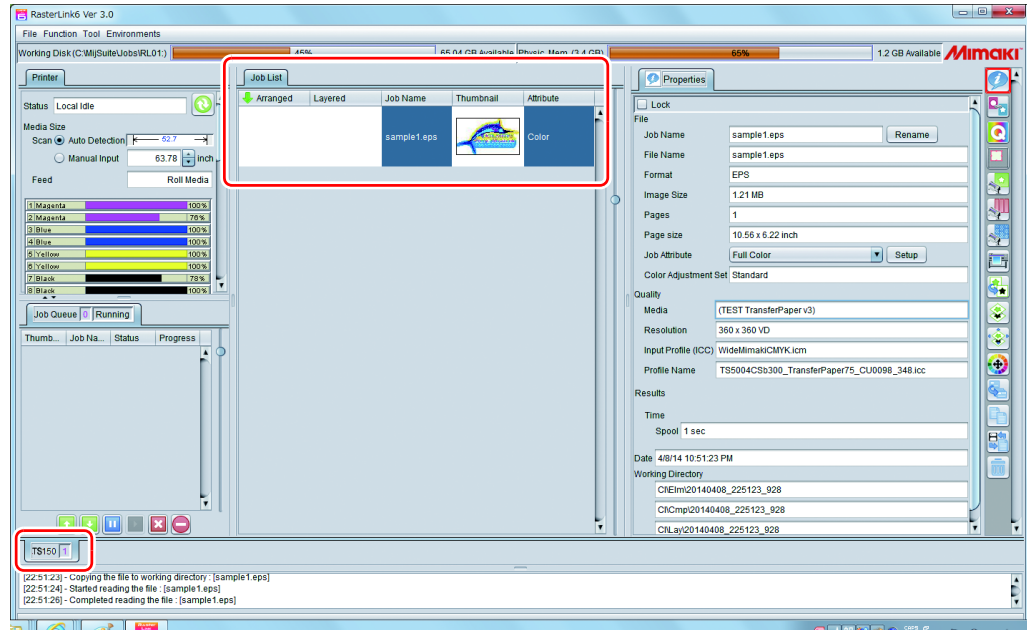
- The “Select file name to print” dialog is displayed.

## 5. Select the file to be printed, and click [Open].

- If more than one printer is registered, select [TS300] from [Printer Name].
- For details on the favorites setting, refer to [Reference Guide of the RasterLink](#).
- The file is loaded. The loaded file is displayed on the [TS300] tab in the main window.





## 6. Select the file loaded into the [TS300] tab.



## 7. To check or edit the settings, from [Function icons] displayed in the right side of the window, select the icons shown below.

- For details about each function icon, refer to [Reference Guide of the RasterLink](#).

(1) To specify the enlargement, reduction, or copy setting, select  (General Print).

(2) To select a profile that matches the medium or ink set installed in TS300P-1800, select  (Quality).


## 8. To print a file, select (Execution) from the [Function icons] displayed in the right side of the window.

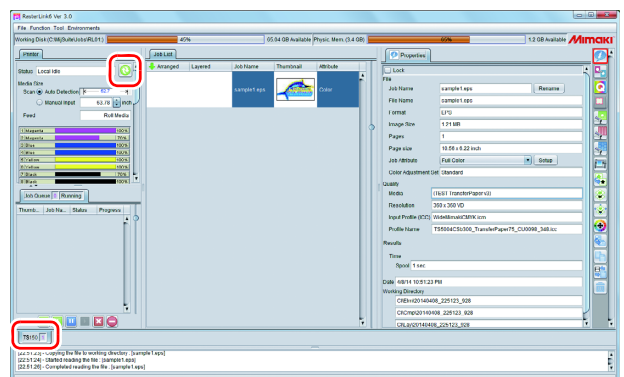
- (1) Select [RIP & Print] or [Immediate Print].
- (2) Click [Start].



- If you have replaced a medium in TS300P-1800, perform the following steps to acquire the width of the medium from the printer.

1. In the media window, select the [TS300] tab.

2. In the [Printer] section, click .



# Download the profile suitable for the using condition.

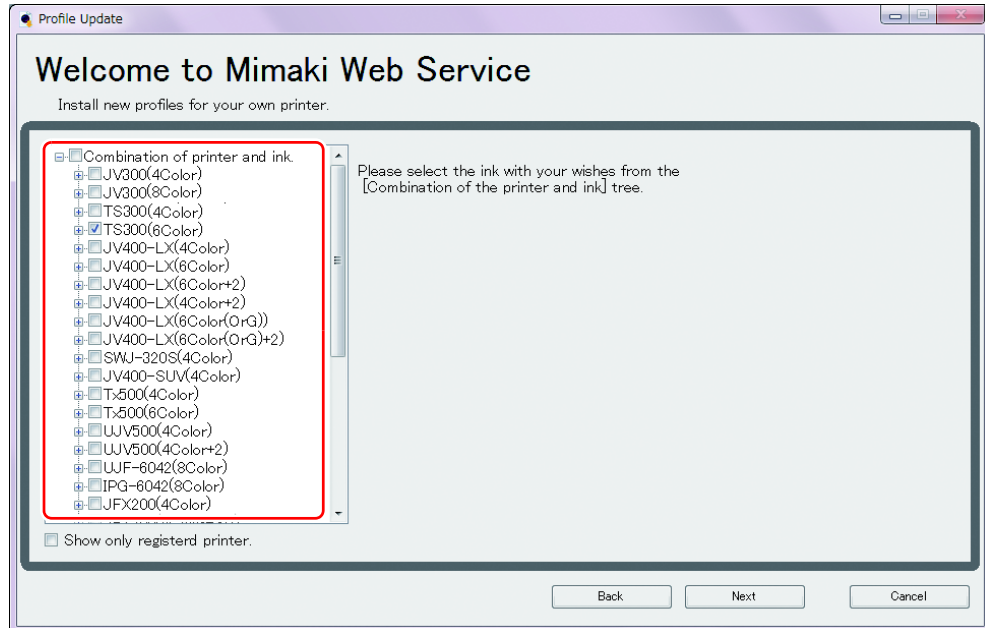
Here, the download method of the profile suitable for the ink set to use is explained.  
Read this by replacing the printer/ the profile with the one you use.

## 1. Start the Profile Update.

- (1) Select [RasterLink6] - [Update] - [Profile Update] from the Start menu.
- (2) Click [Next].

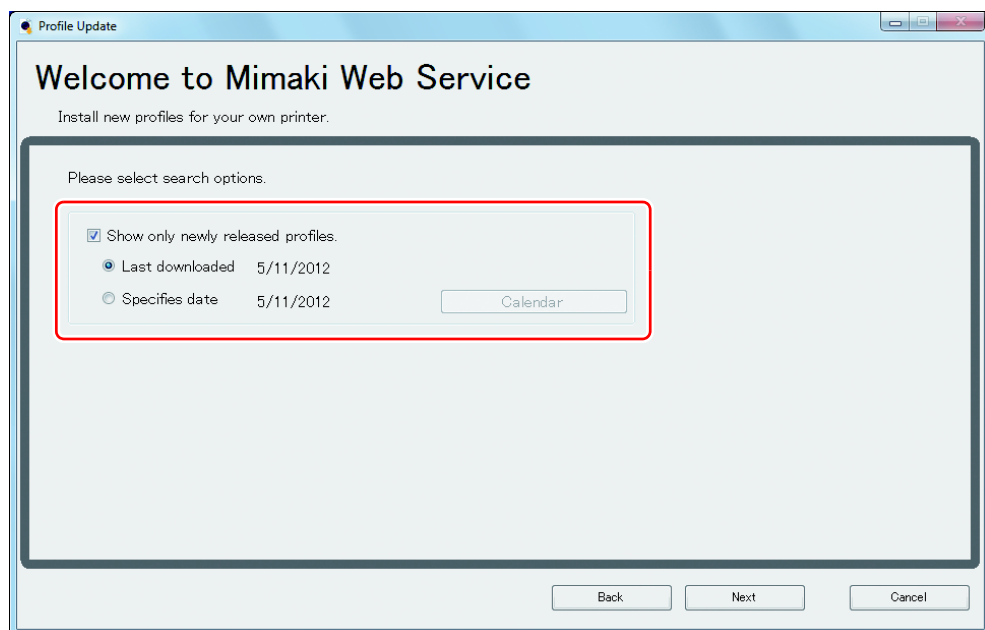
## 2. Specify the printer and ink to install a profile.

- After selecting, click [Next].



## 3. Specify the option.

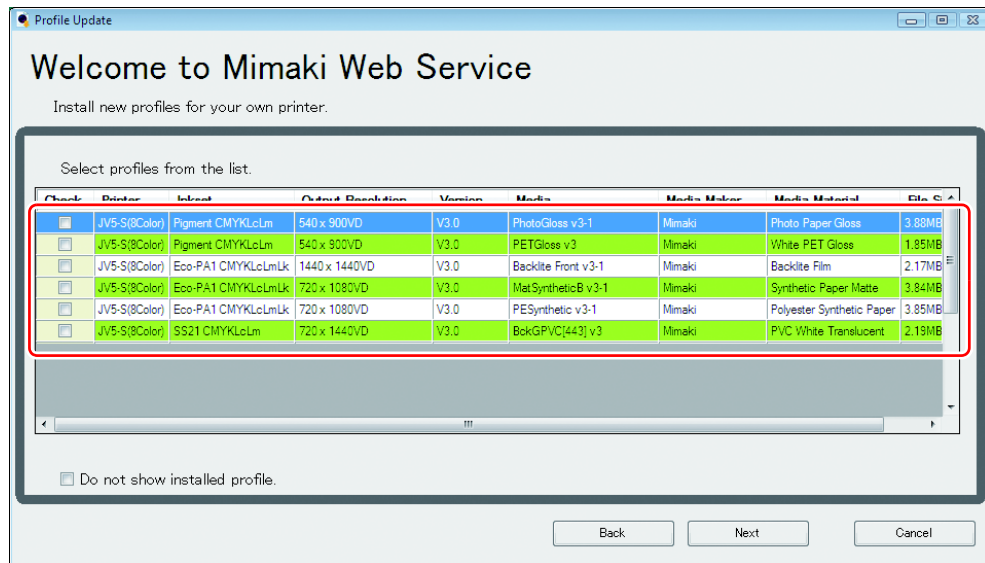
- (1) After selecting, click [Next].
- (2) Connect the Internet and check the profile.





## 4. Download the profile.

- If there are profiles that meet the settings, the list appears.
  - (1) Select the profile to install, and click [Next]
  - (2) Click [Finish] to end the download procedure.



- The profile is installed when RasterLink6 is started next. Refer to [Installation Guide of the RasterLink](#) for details.
- You can also download the profile from our website. (<http://mimaki.com/>)



## Typical questions

The answers to the questions/ the troubles frequently asked by the customer are provided.

### About errors

#### ● “Replace a Wiper” is displayed

Time for replacement of the wiper has come.

Replace the wiper by following the procedures in [Chapter 4 “Replacing the wiper” of TS300P-1800 Operation Manual](#).

#### ● “Waste ink full” is displayed

The waste ink tank is full. Replace the waste ink tank by following the procedures in [Chapter4 “If a Waste Ink Tank Confirmation Message Appears” of TS300P-1800 Operation Manual](#).

### Supplied items

Purchase them in a distributor in your district or our office.

Name of part	Type of Ink	Part codes
Cleaning Liquid 03 MAINTENANCE KIT	Sublimation dye ink :Sb410 Sublimation dye ink :Sb411	ML003-2-K1

Name of part	Part codes
Waste ink tank (2L)	SPA-0246
Wiper kit 300 TS	SPA-0271
Clean stick for the surroundings of the head 50pcs	SPC-0527
CP Pad Set	SPA-0269
Cutter blades assy	SPA-0107
Exhaust BOX	SPA-0248
Exhaust BOX filter	SPA-0249





